

# North Eastern Door Frames : Frame Order Form

TITLE

PROJECT: .....  
 AUTHOR: .....  
 INFO SOURCE: .....

PAGE..... OF.....  
 DATE:.....  
 DATE RQD:.....

DOOR

DOOR NUMBER OR TYPE: ..... TOTAL QUANTITY: .....

HANDING: LEFT QTY: ..... RIGHT QTY: ..... DOUBLE - LHA QTY: ..... DOUBLE - RHA QTY: .....

DIMENSIONS (Provide one):

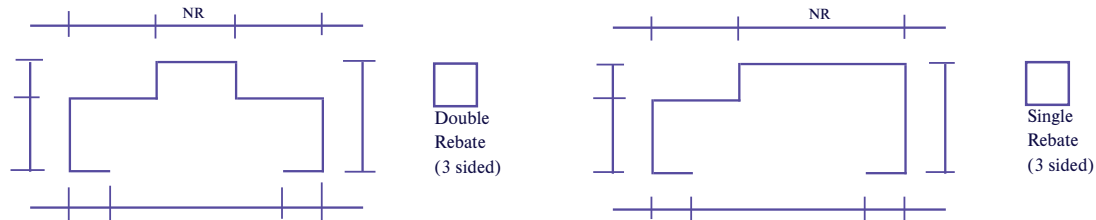
Frame Overall Size: Height: ..... Width: ..... Reveal Size: Height: ..... Width: .....  
 Door Size: Height: ..... Width: ..... Clear Opening Size: Height: ..... Width: .....

DOOR TYPE:  Standard  Fire  Acoustic  Radiation  Cyclone  Specialised

Door Thickness:.....

WALL NUMBER OR TYPE: .....

PROFILE TYPE:



FIXING METHOD (Choose one):

Wire Ties  Tube Fix 6mm  Tube Fix 10mm  Wing Straps  Back Straps  None  
 Stud Clips:  Fixed  Removable Door Side:..... mm Blank Side:..... mm

OPTIONS

MATERIAL THICKNESS:

1.1 mm  1.5 mm  Other ..... MATERIAL TYPE: (Zincanneal and Galvabond frames are all supplied spot primed)

HINGE PREP: Qty: .....  100x75  100x100

LOCK HEIGHT:  Universal  Electric  Other .....

LOCK TYPE:  Standard (1025mm)

DEADLOCK TYPE AND HEIGHT (Leave blank if none): .....

NOTES:

QA

CUSTOMER APPROVAL TO COMMENCE WORK

Name:..... Sign: ..... Date: ..... (mm / dd / yyyy)



5/14 Geebung Drive, Port Macquarie NSW 2444 | 36 Enterprise Drive Beresfield NSW 2322  
 10 Production Drive Wauchope NSW 2446 | PHONE: (02) 6581 2822 | FAX: (02) 6581 2802  
 EMAIL: doors@nedf.com.au | WEB: www.nedf.com.au



© 2025\_NEDF\_V2.0\_09/25

All statements, technical information, and recommendations related to NEDF's products are based on information believed to be reliable, but the accuracy or completeness is not guaranteed. Before using this product, you must evaluate it and determine if it is suitable for your intended application.

Custom Single and Double Rebate Profile